



Wallagoot Lake Boat Club 2026 Regatta

Sailing Instructions

Saturday 7th & Sunday 8th March 2026

1 Rules

- 1.1. The regatta will be governed by the rules as defined in the current *World Sailing 'Racing Rules of Sailing'*.
- 1.2. *'AS Special Regulations Part 2'* and Class Rules will apply.

2 Alteration to the Racing Rules

- 1.3. Rule 44.1 "Taking a Penalty" for breaking one or more rules in part 2 is changed for trailable yachts and catamarans: they need only take a One-Turn Penalty, including one tack and one gybe. There is no change to the rules for monohull dinghies.
- 2.2 A boat starting later than 10 minutes after her starting signal may be scored Did Not Start without a hearing.
- 2.3 A boat starting more than 2 minutes after her start needs to keep clear of other boats starting.
- 2.4 A boat that passes through the line marked by the Committee Boat displaying a Blue 'on station' flag and the finish mark may be disqualified unless they are finishing.

3 Entries

- 3.1 Eligible boats may be entered by completing registration with the Wallagoot Lake Boat Club (WLBC).
- 3.2 The Yardsticks provided by Australian Sailing will be used where applicable.
- 3.3 The Race Committee reserves the right to assign a yardstick for any entrants.

4 Notices to Competitors

- 4.1 Notices to competitors will be posted on the official notice board, located inside the clubhouse, to the right of the door leading to the veranda.

5 Changes to Sailing Instructions

- 5.1 Any change to the sailing instructions will be posted on the official notice board, and code flag L will be displayed on the clubhouse flagpole, with one sound signal. This changes RRS Appendix S 3.1.

6 Signals Made Ashore

- 6.1 Signals made ashore will be displayed from the clubhouse veranda.
- 6.2 When flag AP is displayed ashore, '1 minute' is replaced with 'not less than 20 minutes' in the race signal AP. This changes RRS Appendix S 4.2.

7 Schedule of Races

Registration:	Saturday 7 th March	8:30 to 10:00am
Briefing:	Saturday 7 th March	10:00am
Session 1:	Saturday 7 th March	11:00am
Session 2:	Saturday 7 th March	2:00pm
Session 3:	Sunday 8 th March	10:00am



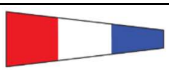
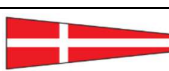
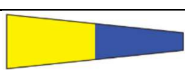
We plan to have 5 races over the regatta with 3 races on Saturday and 2 races on Sunday.

If there are only 2 races on Saturday, the PRO may decide to have 3 races back to back on the Sunday.

No warning signal will be made after 15:00 on the last day of racing.

8 Divisions & Flags

Division flags will be the numeral pennant corresponding to the division number.

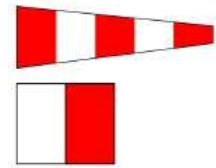
Division	Description	Flag	
Division 1	Catamarans	Numeral pennant 1	
Division 2	Monohulls with yardstick <119	Numeral pennant 2	
Division 3:	Monohulls with yardstick ≥119	Numeral pennant 3	
Division 4:	Trailable yachts	Numeral pennant 4	
Division 5:	Hansa dinghies	Numeral pennant 5	

The race committee may create and abolish divisions at its discretion. Divisions may be started together at the discretion of the Race Officer.

9 Other Flags

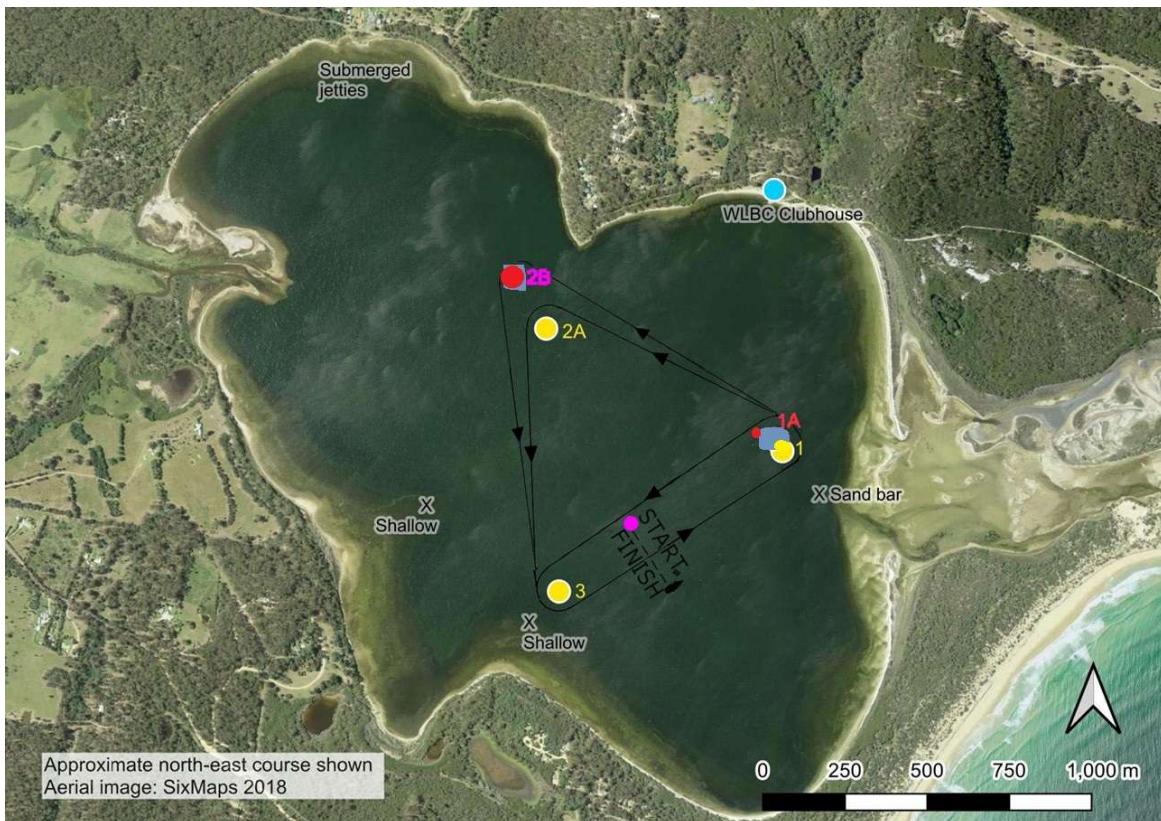
The Committee Boat will display:

- 9.1 a red flag indicating all marks to be taken to Port, or
- 9.2 a green flag indicating all marks to be taken to Starboard.
- 9.3 An orange flag when on station at the **start**
- 9.4 A blue flag when on station at the **finish**
- 9.5 When back-to-back races are scheduled:
 - 9.5.1 If the committee boat is flying the AP flag whilst on station at the finish line, it is the intention of the PRO to conduct back to back races, starting shortly after the last boat finishes the preceding race or the time limit expires (see clause 15.1). Competitors should remain in the course area but not impede boats still racing.
 - 9.5.2 An orange flag will be hoisted before the first warning signal with one sound and lowered after the last start without a sound, when there is a back to back race, the orange flag will replace the blue finishing flag as soon as the last boat finishes or the time limit has expired.
- 9.6 When flags AP over H are displayed, racing is postponed, and sailors should return to shore to await further instruction.
- 9.7 Lowering of the AP on shore indicates racing will begin soon and sailors should return to the water.



10 Racing Area

- 10.1 The racing area includes most of Wallagoot Lake.
- 10.2 Submerged jetties may form a hazard at some locations on the north-west shore of the lake.
- 10.3 A sand bar may be present on the eastern shore of the lake.



11 The Courses

- 11.1 Marks 1, 2a and 3 will be laid in an approximately equal triangle.
- 11.2 A clearance mark will be laid near Mark 1. All boats must round this when rounding Mark 1.
- 11.3 Mark 2b will be laid for the catamarans.
- 11.4 The following table shows the order in which the marks are to be rounded or passed as well as the number of rounds to be completed in each course.
- 11.5 The course number will be displayed from the start boat at or before the warning signal for that fleet.

Courses: - note course 1 & 2 for each division

Div 1 (Catamarans): course 1:

Start - 1 - 2B - 3
 1 - 3
 1 - 2B - 3
 1 - 2B - 3 - Finish

Division 1 (Catamarans): course 2:

Start - 1 - 2B - 3
 1 - 3
 1 - 2B - 3 - Finish

Div 2 (Monos <119): course 1:

Start - 1 - 2A - 3
 1 - 3
 1 - 2A - 3
 1 - 3 - Finish

Div 3 (Monos ≥119): course 1

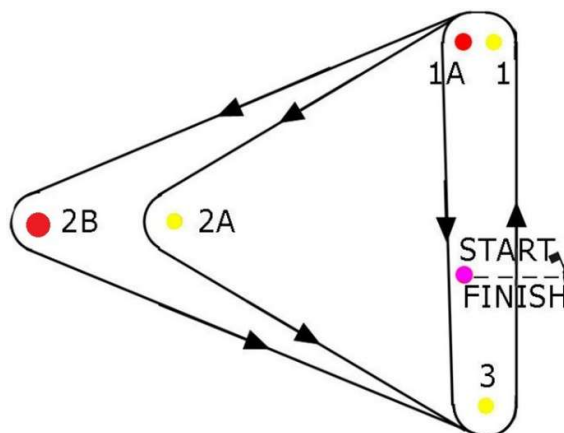
Start: 1 - 2A - 3
 1 - 3
 1 - 2A - 3 - Finish

Div 4 (Trailable yachts): course 1:

Start - 1 - 2A - 3
 1 - 2A - 3
 1 - 3 - Finish

Div 5 (Hansa dinghies): course 1

Start: 1 - 2A - 3
 1 - 3 - Finish



Div 2 (Monos <119) course 2:

Start - 1 - 2A - 3
 1 - 3
 1 - 2A - 3 - Finish

Div 3 (Monos ≥119): course 2:

Start: 1 - 2A - 3
 1 - 3 - Finish

Div 4 (Trailable yachts): course 2:

Start - 1 - 2A - 3
 1 - 2A - 3 - Finish

Div 5 (Hansa dinghies): course 2:

Start: 1 - 2A - 3 - Finish

12 Marks

- 12.1 Marks 1, 2A and 3 will be yellow cylindrical, inflatable buoys.
- 12.2 Mark 1A will be a small red spherical hard plastic buoy.
- 12.2 Mark 2B will be a red cylindrical, inflatable buoy.
- 12.3 The mark at the pin end of the start / finish line will be a pink cylindrical, inflatable buoy.

13 The Start

- 13.1 Races will be started using a 3-minute sequence (this changes Rule 26):

Minutes before start	Flag
3	Warning signal - divisional pennant flag up
2	Preparatory flag up
1	Preparatory flag down
0	Divisional pennant down & next warning signal up

- 13.2 The starting line will be between the staff flying an orange flag on the WLBC Committee Boat and the pink cylindrical inflatable buoy.
- 13.3 Boats whose warning signal has not been made shall avoid the starting area during the starting sequence for other races.
- 13.4 A boat starting later than 2 minutes after her starting signal shall not interfere with other classes who are within their sequence and may be scored Did Not Start without a hearing. This changes rule Appendix A4.
- 13.5 Any fleet that has been given a general recall by the race committee, shall sail to the pre-start side of the starting line. Their next start sequence will start 1 minute after the first substitute is lowered.

14 The Finish

- 14.1 The finish line will be between the staff on the Committee Boat, displaying a blue flag, and a pink inflatable buoy at the pin end of the line.
- 14.2 If the AP flag is flying from the finish boat, it is the intention of the PRO to start another race soon after the last boat has finished, or the time limit is reached.

15 Time Limit

- 15.1 The time limit for each race will be 20 minutes after the first boat in each division has finished the race. Boats failing to finish within the time limit will be scored Did Not Finish.

16 Protests

- 16.1 Protests shall be written on forms available at the Race Office.
- 16.2 The protest time limit is 60 minutes after the last boat has finished the last race of the day.
- 16.3 Notices will be posted no later than 30 minutes after the protest time limit, to inform competitors of hearings in which they are parties or named as witnesses.
- 16.4 Hearings will be held in the WLBC Clubhouse at a time to be determined by the race committee.

17 Scoring

- 17.1 The low-point scoring system will be used, as described in Appendix A of the Racing Rules of Sailing.
- 17.2 Each boat's series score shall be the total of her race scores, excluding her worst score.
- 17.3 In the event of any races being abandoned, all remaining races will constitute a regatta.

18 Safety Regulations

- 18.1 Competitors shall wear personal flotation devices. Wet suits and dry suits are not personal flotation devices.
- 18.2 All competitors must sign on prior to each race. When races are held back-to-back, a single sign-on shall include all races in that session.
- 18.3 All competitors must sign off within 60 minutes of the last boat finishing.
- 18.4 A boat that retires from a race shall sign off and write "DNF" near their signature.

19 Disclaimer of Liability

- 19.1 All competitors taking part in WLBC races do so at their own risk and responsibility. The WLBC is not responsible for the seaworthiness or insurance of a boat participating in the regatta, or the adequacy of its equipment. Attention is drawn to RRS 3.
- 19.2 The organising authority will not accept any liability for material damage, personal injury or death sustained in conjunction with or prior to, during, or after the regatta.
- 19.3 The WLBC expects that each skipper has current Australian Sailing membership, along with personal accident insurance and third party liability for their boat. The WLBC takes no responsibility for checking if people or boats are insured.